

# RCR Certification Process

December 4<sup>th</sup> 2021

Associate Professor & Director of Signature Work

Benjamin Bacon

# RCR: Responsible Conduct of Research

- What is RCR?
- Responsible Conduct of Research covers core norms, principles, regulations, and rules governing the practice of research.
- RCR is a crucial component of the education provided to students and trainees who are involved in research.
- RCR instruction encourages professional ethical behavior through online trainings, workshops, symposia and other avenues.

# RCR: Responsible Conduct of Research

- The National Institutes of Health (NIH), National Science Foundation (NSF), and U.S. Department of Agriculture (USDA) require certain categories of researchers to receive RCR training.
- RCR is increasingly viewed as an essential component of training, regardless of a researcher's source of funding.
- It is suitable for any person involved in research ranging from upper-level undergraduates to established faculty.

# RCR: Responsible Conduct of Research

- As defined by federal agencies, RCR encompasses the following nine areas:
  - Collaborative Science
  - Conflicts of Interest and Commitments
  - Data Acquisition, Management, Sharing and Ownership
  - Human Research Protections
  - Lab Animal Welfare
  - Mentoring
  - Peer Review
  - Publications Practices and Responsible Authorship
  - Research Misconduct

# RCR: Responsible Conduct of Research

- Duke and DKU uses the online CITI Program course and certification process.
- DKU requires all students who receive a SELF/SRS grant to take the online CITI Program RCR course and certification before funding will become available for use.
- We also require the CITI Program RCR course and certification as a pre-req to register for your capstone courses.
- Please complete your RCR certification before registration begins for next fall.

# RCR: Responsible Conduct of Research

- Let's step through the CITI Program website and how to login to the course.
- <https://about.citiprogram.org/en/series/responsible-conduct-of-research-rcr/>

[Register](#)[Log In](#)[Home](#) > [Courses](#) > [Responsible Conduct of Research \(RCR\)](#)

# Responsible Conduct of Research (RCR)

RCR covers core norms, principles, regulations, and rules governing the practice of research.

ORGANIZATIONS

[LEARN MORE](#)

LEARNERS

[EXPLORE COURSES](#)

QUESTIONS?

[Contact Us](#)

## About these Courses

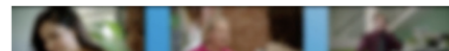
The National Institutes of Health (NIH), National Science Foundation (NSF), and U.S. Department of Agriculture (USDA) require certain categories of researchers to receive RCR training. RCR is increasingly viewed as an essential component of training, regardless of a researcher's source of funding.

RCR consists of a basic course, additional content that can be incorporated based on organizational and learner needs, and a refresher course, which reemphasizes and expands on key concepts. It is suitable for any person involved in research ranging from upper-level undergraduates to established faculty.

Particular emphasis is given to the educational needs of graduate students and postdoctoral researchers. RCR can provide students or other researchers with a conceptual foundation that can enhance the quality of in-person training.

These courses were written and peer-reviewed by experts.

View a sample of our updated RCR case videos:



[LOG IN](#)

[LOG IN THROUGH MY ORGANIZATION](#)

[REGISTER](#)

**i** Due to planned maintenance, the CITI Program website will be unavailable from 9 p.m. Sunday February 28th to 1 a.m. Monday March 1st U.S. Eastern Time (6 p.m. to 10 p.m. U.S. Pacific). We apologize for the inconvenience.

### CITI - Learner Registration

Steps: **1** 2 3 4 5 6 7

#### Select Your Organization Affiliation

This option is for persons affiliated with a CITI Program subscriber organization.

To find your organization, enter its name in the box below, then pick from the list of choices provided. 

Duke

DUKE ARLG MDRO

Duke Health

Duke Health (SSO)

Duke RCR (SSO)

Duke University Campus IRB

Duke University Campus IRB (SSO)

Use this option if you are paying for your courses. This option is for persons not affiliated with a CITI Program subscriber organization, or who require content that their organization does not provide. Fees apply. Credit card payment with American Express, Discover, MasterCard or Visa is required. Checks are not accepted.

I AGREE to the [Terms of Service](#) and [Privacy Policy](#) for accessing CITI Program materials.

New to the CITI Program? Read the [getting started guide](#) or watch the [getting started video](#).

Need Help? [Support Center](#)



[LOG IN](#)[LOG IN THROUGH MY ORGANIZATION](#)[REGISTER](#)

**i** Due to planned maintenance, the CITI Program website will be unavailable from 9 p.m. Sunday February 28th to 1 a.m. Monday March 1st U.S. Eastern Time (6 p.m. to 10 p.m. U.S. Pacific). We apologize for the inconvenience.

### CITI - Learner Registration

Steps: **1** 2 3 4 5 6 7

#### Select Your Organization Affiliation

This option is for persons affiliated with a CITI Program subscriber organization.

To find your organization, enter its name in the box below, then pick from the list of choices provided. 

Duke RCR only allows the use of a Single Sign On (SSO) for CITI Program access.

**Single Sign On (SSO) requires a username and password issued by Duke RCR.**

- I AGREE to the [Terms of Service](#) and [Privacy Policy](#) for accessing CITI Program materials.
- I affirm that I am an affiliate of Duke RCR.

[Continue To SSO Login / Instructions](#)

———— or ————

#### Independent Learner Registration

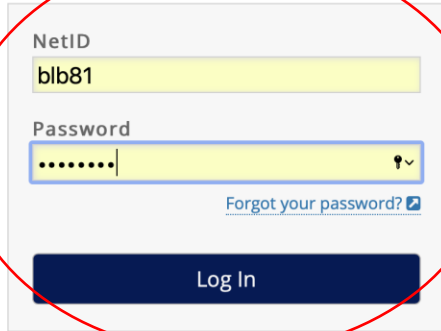
Use this option if you are paying for your courses. This option is for persons not affiliated with a CITI Program subscriber organization, or who require content that their organization does not provide. Fees apply. Credit card payment with American Express, Discover, MasterCard or Visa is required. Checks are not accepted.

- I AGREE to the [Terms of Service](#) and [Privacy Policy](#) for accessing CITI Program materials.

You are on the correct Duke login page if the above begins with: <https://shib.oit.duke.edu>.

## NetID

Current students, faculty, staff, sponsored  
guests



NetID

Password

[Forgot your password?](#)

Log In

For assistance, please visit [oit.duke.edu/help](https://oit.duke.edu/help) or [dhts.duke.edu](https://dhts.duke.edu).

## Welcome, Benjamin

[Add Institutional Affiliation](#)[Register as Independent Learner](#)

**Due to planned maintenance, the CITI Program website will be unavailable from 9 p.m. Sunday February 28th to 1 a.m. Monday March 1st U.S. Eastern Time (6 p.m. to 10 p.m. U.S. Pacific). We apologize for the inconvenience.**

### Institutional Courses

Institutional Courses are available to learners who have an affiliation with one or more subscribing institutions. If an institution with which you are affiliated is not listed, you may want to [add an affiliation](#). If you are no longer associated with a listed institution, you may want to [remove an affiliation](#).

Duke RCR

[View Courses](#)

Would you like to affiliate with another Institution?

[Add Affiliation](#)

Would you like to remove an existing affiliation?

[Remove Affiliation](#)

### Independent Learner

Register as an independent learner to purchase course content. Before you purchase

## Learner Tools for Duke RCR

- [Add a Course](#)
- [Remove a Course](#)
- [View Previously Completed Coursework](#)
- [Update Institution Profile](#)
- [View Instructions Page](#)
- [Remove Affiliation](#)



# Select Curriculum

Duke RCR

## Question 1

To enroll in the appropriate Responsible Conduct of Research course, please select the option that best matches your current research role and responsibilities.

This question is required. Choose one answer.

- Faculty
- Staff
- PhD and Masters Students
- Medical Student
- Undergraduate Students

Start Over

Next

#### SUPPORT

888.529.5929

8:30 a.m. – 7:30 p.m. ET

Monday – Friday

[Contact Us](#)

#### LEGAL

[Accessibility](#)

[Copyright](#)

[Privacy and Cookie Policy](#)

[Statement of Security Practices](#)

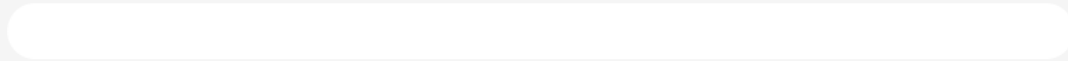
[Terms of Service](#)

Duke RCR

## Undergraduate Student Responsible Conduct of Research

Stage 1 - Basic Course

0 / 4 modules completed



[Start Now](#)

# RCR: Responsible Conduct of Research

- Now your ready.
- The training will take about 4.5 hours to complete.
- When you are finished, save the completed course certificate as a PDF and e-mail it to: [signaturework@dukekunshan.edu.cn](mailto:signaturework@dukekunshan.edu.cn)

# RCR: Responsible Conduct of Research

- <https://about.citiprogram.org/en/series/responsible-conduct-of-research-rcr/>



# RCR: Responsible Conduct of Research

- QUESTIONS?